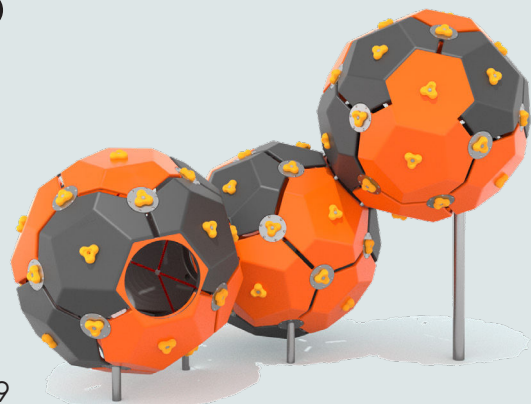


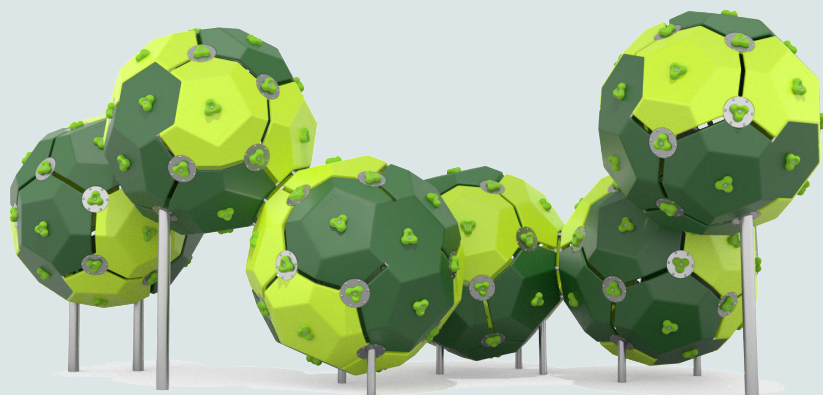


Bubbles

MATERIAL SPECIFICATION



9509



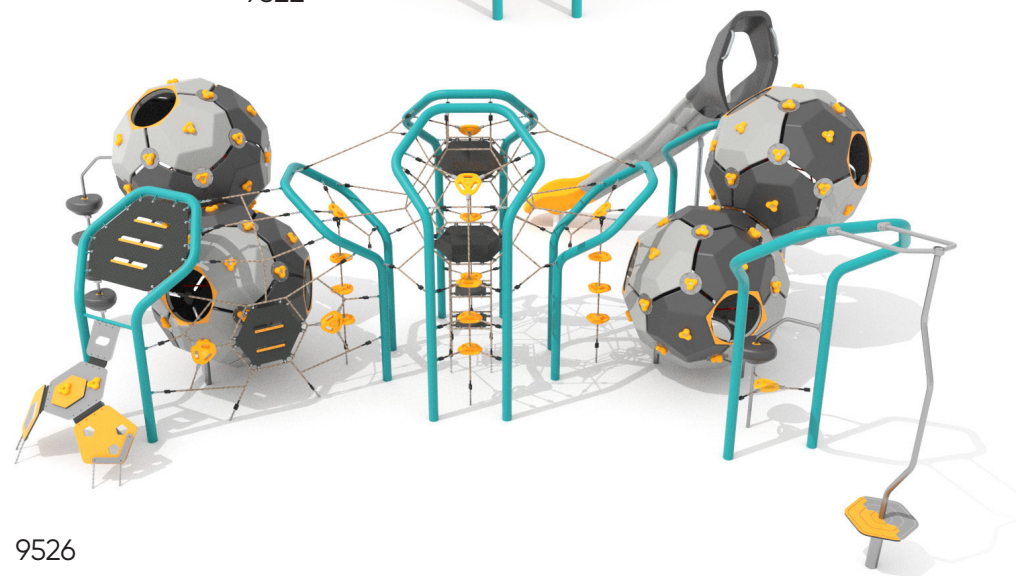
9506

Bubbles

The Buglo Bubbles collection is a space that grows with children - both in terms of play and development. You can easily adapt the flexible structures to different spaces, creating ideal conditions for play and integration for both younger and older children. The ability to choose configurations singly, in pairs, and even in threes allows you to create a playground that will fit into any environment.



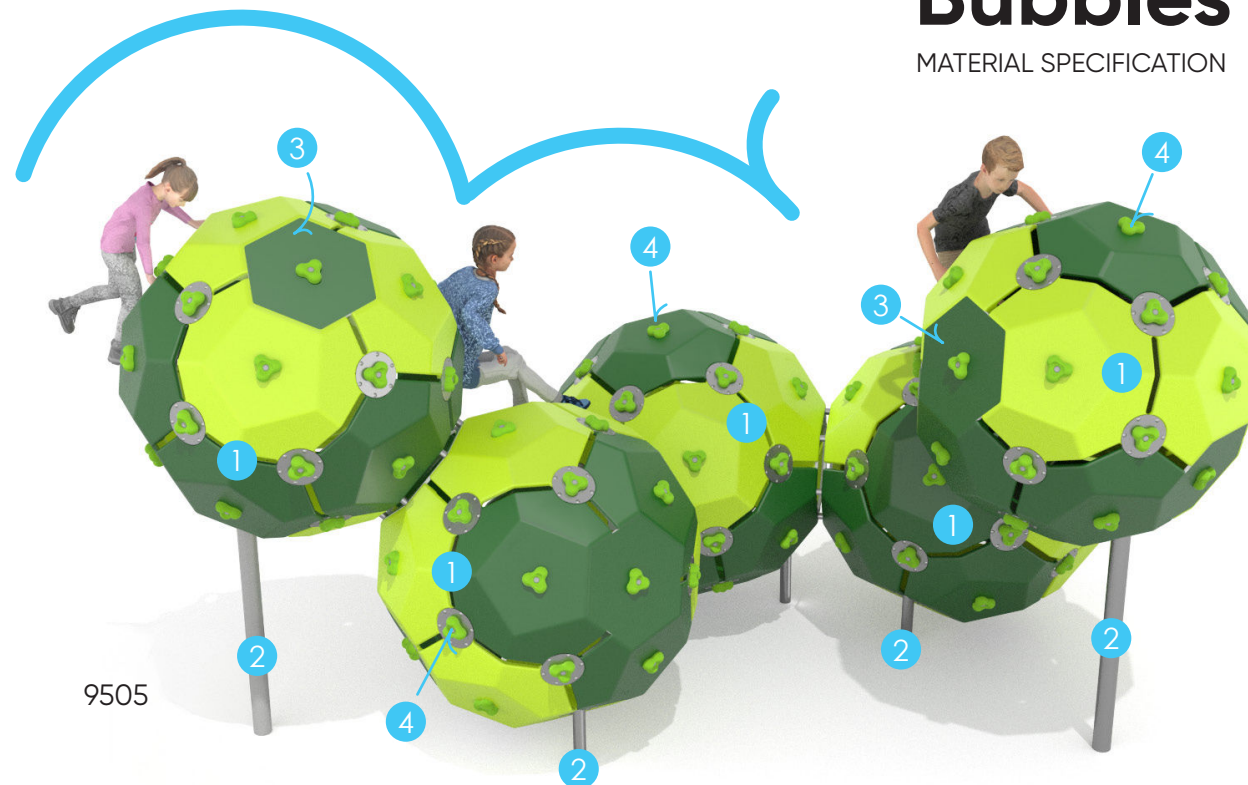
9522



9526

Bubbles Atomiq

The Bubbles Atomiq collection is an evolution of the classic Bubbles spheres. The collection was inspired by the concept of atoms - the smallest building blocks of the world - which bond together to create durable and complex structures. Connected by hexagonal steel frames filled with rope nets and reinforced rubber, they form a space full of functionality and diverse ways to play. Children can swing, spin, and slide, enjoying active play and experimenting with the space. The playground develops coordination, balance, and creativity, accompanying children at every stage of their play.



1 Element made using the rotomoulding method from LDPE material. Each sphere is made of 12 such elements.



2 A solid structure made of AISI 304 stainless steel, cleaned by glass bead blasting, completely resistant to weather conditions.



3 Panels made of coloured, three-layer HDPE polyethylene with a thickness of 15 mm, of the highest quality, completely resistant to moisture and UV radiation.



4 Climbing stones made of a mixture of aggregates and coloured polyester resins.

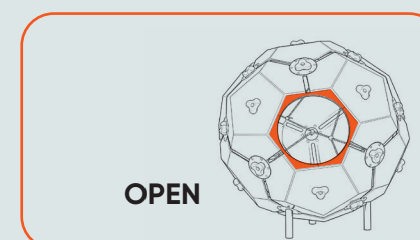


5 Polypropylene ropes of the PP-Multisplit type with a 16 mm diameter with a steel core.

In Bubbles, the choice is yours - available are closed bubbles, with no possibility of going inside, and open ones. Configuration? As always at Buglo, you decide! They can be single, in pairs, or perhaps in threes? They will adapt to any space, and you will choose the colours from the Buglo palette that best match the surroundings.



or



Bubbles Atomicq

MATERIAL SPECIFICATION

9528



Let's explore



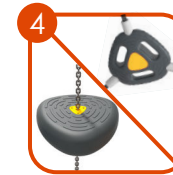
1 Solid construction made of black steel S235JR, cleaned in the sandblasting process. All elements made of black steel are subjected to a two-layer powder coating process, which includes the following stages: First layer – zinc-rich primer, Second layer – topcoat in RAL colour.



2 Element made using the rotomoulding method from LDPE material. Each sphere is made of 12 such elements.



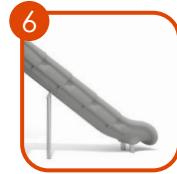
3 Elements made of AISI 304 stainless steel, cleaned by glass bead blasting, completely resistant to weather conditions.



4 Modules made of LDPE formed by the rotomoulding method, allowing for the development of fitness and motor coordination.



5 Climbing stones made of a mixture of aggregates and coloured polyester resins.



6 Open, modular, polyethylene slides made using the rotomoulding method from LDPE material



7 Polypropylene ropes of the PP-Multisplit type with a 16 mm diameter with a steel core.



8 Panels made of coloured, three-layer HDPE polyethylene with a thickness of 15 mm, of the highest quality, completely resistant to moisture and UV radiation.



9 Reinforced rubber with a thickness of 10 mm with an anti-slip structure.



10 Certified 6 mm stainless steel chains.



11 Platform panels made of coloured HPL material with a thickness of 13 mm (black HPL panel with a thickness of 8 mm), of the highest quality, completely resistant to moisture and UV radiation.





Entrance with mushroom-shaped steps made of anti-slip LDPE, set on a stainless steel structure. The element facilitates access to the equipment and encourages children to climb and play actively.



Hexagon-shaped climbing module made of a steel tube with a climbing element made of anti-slip reinforced rubber with milled holes secured with an HDPE panel. The structure is complemented by sliding tubes made of stainless steel.



Climbing module in a geometric hexagon shape with a climbing element made of anti-slip reinforced rubber. A movable climbing wall on a spring, equipped with steps made of HDPE panels. It introduces dynamics to play and supports the development of motor coordination.



The starting part of the slide is made using the rotomoulding method from durable LDPE, equipped with stainless steel handles. The element ensures a comfortable and safe start to the slide and meets the standards PN-EN 1176. ASTM F1487-25 CSA Z614:20.



A vertical carousel with an HPL platform and a stainless steel handle enables safe spinning, developing children's balance and fitness.



Rubber Climb is a climbing element in the form of a slightly swaying ramp, made of reinforced rubber with an anti-slip structure and milled handles secured with an HDPE panel. The element develops balance and encourages children to climb actively.



Twin Bridge is a climbing element in the form of a slightly swaying ramp, made of reinforced rubber with an anti-slip structure and milled handles secured with an HDPE panel. The element develops balance and encourages children to climb actively. Stable connections with stainless steel chains and aluminium sleeves guarantee the durability of the structure.



A swing module with a resting place combines play and relaxation. The steel swing frame, and a seat made of aluminium and soft EPDM rubber suspended on steel chains ensure safe swinging, whilst the attached table with chairs made of coloured HDPE polyethylene creates a place to rest and play at the table. The module is resistant to weather conditions and UV radiation, and the shading made of perforated steel provides additional protection from the sun.



A rope bridge made of durable PP-Multisplit ropes and an anti-slip platform made of reinforced rubber ensures stability and comfort of use. The structure is fastened with stainless steel chains, and the rope ends are secured with aluminium sleeves.



A passage in the form of a vertical climbing net stretched between two hexagonal frames. The structure is made of durable polypropylene rope. Robust stainless steel connections and aluminium-crimped rope terminations ensure high resistance to intensive use.

A vertical rope module with anti-slip LDPE steps enables safe climbing and fitness development. The whole thing, based on durable PP-Multisplit ropes and solid stainless steel fixings, guarantees long-lasting use.