

Information about the product

| | |
|-----------------------------|------------|
| Dimensions | 53 x 53 cm |
| Overall height | 40 cm |
| Availability of spare parts | Yes |

Warranty



10 years

The Guaranty covers all flaws of the elements made of HPL, HDPE, stainless steel, hot-dip galvanized steel, wooden elements (pine, spruce), revealed during usage, which arise from manufacturing reasons.



5 years

The Guaranty covers all flaws of the elements made of powder coated steel, aluminum, laminate, ropes, elements made in rotomoulding technology, elements made of polyamid, polypropylene elements, revealed during usage, which arise from manufacturing reasons.



2 years

The Guaranty covers all flaws of the elements made of rubber, moving elements (bearings, joints), electronic elements, elements made of EPDM, elements made of plywood and other not mentioned before revealed during usage, which arise from manufacturing reasons.

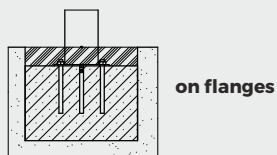
Product description

Construction: Made of 2 mm thick AISI 304 stainless steel sheet, cleaned through bead blasting.

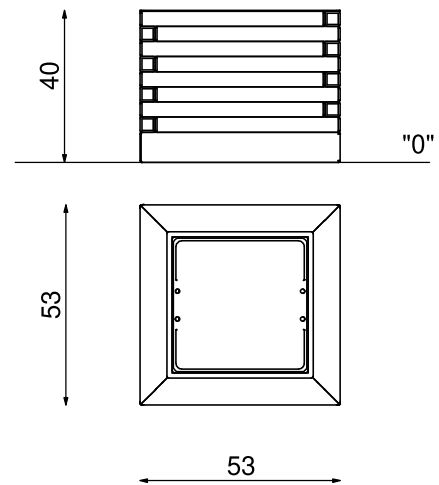
Wood: African exotic wood, characterised by high durability and density. Boards with a cross-section of 40x40 mm impregnated with transparent oil for exotic wood.

Insert: Made of plastic, with the option to include drainage holes.

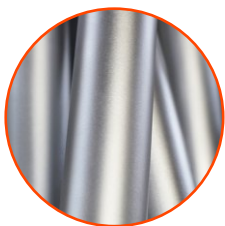
Installation method



1:20



Materials



Construction made of stainless steel AISI304 resistant to various weather conditions.



Exotic wood IROKO 40x40mm.